

Spin fluctuation induced linear magnetoresistance in ultrathin superconducting FeSe films

This content has been downloaded from IOPscience. Please scroll down to see the full text.

2017 2D Mater. 4 034004

(<http://iopscience.iop.org/2053-1583/4/3/034004>)

View [the table of contents for this issue](#), or go to the [journal homepage](#) for more

Download details:

IP Address: 155.98.4.63

This content was downloaded on 14/08/2017 at 21:03

Please note that [terms and conditions apply](#).

OPEN ACCESS

PAPER



Spin fluctuation induced linear magnetoresistance in ultrathin superconducting FeSe films

RECEIVED
16 May 2017REVISED
18 July 2017ACCEPTED FOR PUBLICATION
21 July 2017PUBLISHED
14 August 2017

Original content from this work may be used under the terms of the [Creative Commons Attribution 3.0 licence](https://creativecommons.org/licenses/by/3.0/).

Any further distribution of this work must maintain attribution to the author(s) and the title of the work, journal citation and DOI.

Qingyan Wang^{1,7}, Wenhao Zhang^{2,7}, Weiwei Chen^{3,7}, Ying Xing^{1,6}, Yi Sun¹, Ziqiao Wang¹, Jia-Wei Mei⁴, Zhengfei Wang³, Lili Wang^{2,5}, Xu-Cun Ma^{2,5}, Feng Liu^{4,5}, Qi-Kun Xue^{2,5} and Jian Wang^{1,2,5}¹ International Center for Quantum Materials, School of Physics, Peking University, Beijing 100871, People's Republic of China² State Key Laboratory of Low-Dimensional Quantum Physics, Department of Physics, Tsinghua University, Beijing 100084, People's Republic of China³ Hefei National Laboratory for Physical Sciences at the Microscale, CAS Key Laboratory of Strongly-Coupled Quantum Matter Physics, University of Science and Technology of China, Hefei, Anhui 230026, People's Republic of China⁴ Department of Materials Science and Engineering, University of Utah⁵ Collaborative Innovation Center of Quantum Matter, 100084 Beijing, People's Republic of China⁶ Beijing Key Laboratory of Optical Detection Technology for Oil and Gas, China University of Petroleum, Beijing 102249, People's Republic of China⁷ Qingyan Wang, Wenhao Zhang, Weiwei Chen contributed equally to this work.E-mail: zfwang15@ustc.edu.cn, liliwang@mail.tsinghua.edu.cn, fliu@eng.utah.edu and jianwangphysics@pku.edu.cn**Keywords:** FeSe/STO, linear magnetoresistance, superconductivity, spin fluctuation**Abstract**

The discovery of high-temperature superconductivity in FeSe/STO has triggered great research interest to reveal a range of exotic physical phenomena in this novel material. Here we present a temperature dependent magnetotransport measurement for ultrathin FeSe/STO films with different thickness and protection layers. Remarkably, a surprising linear magnetoresistance (LMR) is observed around the superconducting transition temperatures but absent otherwise. The experimental LMR can be reproduced by magnetotransport calculations based on a model of magnetic field dependent disorder induced by spin fluctuation. Thus, the observed LMR in coexistence with superconductivity provides the first magnetotransport signature for spin fluctuation around the superconducting transition region in ultrathin FeSe/STO films.

Introduction

Recently, FeSe has attracted extensive attention because of its fascinating superconductivity and intriguing magnetic properties [1–15]. The superconducting transition temperature (T_c) of bulk FeSe is ~ 8 K [1], but a high T_c of ~ 40 – 100 K has been measured by different experimental techniques in one unit-cell (UC) FeSe grown on SrTiO₃(001) (STO) substrate [2–14]. The enhanced T_c in 2D is generally believed to be associated with the interface effects, while the underlying mechanisms for superconductivity are still not fully clear. Both conventional mechanism of electron-phonon coupling [16–18] and other contemporary pairing mechanisms [19–21] have been considered. For the latter, the relationship between superconducting and magnetic properties is of special interest. For bulk iron-based pnictides superconductors, experiments have observed coexistence of superconductivity with antiferromagnetic (AFM) ordering [22], as well as spin fluctuations around superconducting temperatures by inelastic neutron scattering [23]. For 2D FeSe/

STO, combining the theoretical calculation and angle resolved photoemission spectroscopy (ARPES), a checkerboard AFM has recently been identified [24]. Also, spin fluctuation has been proposed to play a significant role in the high T_c mechanism of 2D FeSe/STO [25]. However, direct measurement of spin order and spin fluctuation in FeSe/STO remains too difficult.

Linear magnetoresistance (LMR) is an intriguing phenomenon in the condensed-matter physics, since MR is supposed to be quadratic in conventional materials. LMR has been observed in various systems such as nonmagnetic narrow-band semiconductors Ag_{2+ δ} Se and Ag_{2+ δ} Te [26], InSb [27], epitaxial graphene [28], topological insulators [29], and recent Dirac and Weyl semimetals [30–34]. There are two prevailing models to characterize the LMR, one is the classical model by Parish and Littlewood [35] and the other is the quantum model by Abrikosov [36, 37]. The classical model is proposed for inhomogeneous conducting materials where LMR is linked with electrical disorder, while the quantum model is proposed for gapless materials in quantum limit where LMR

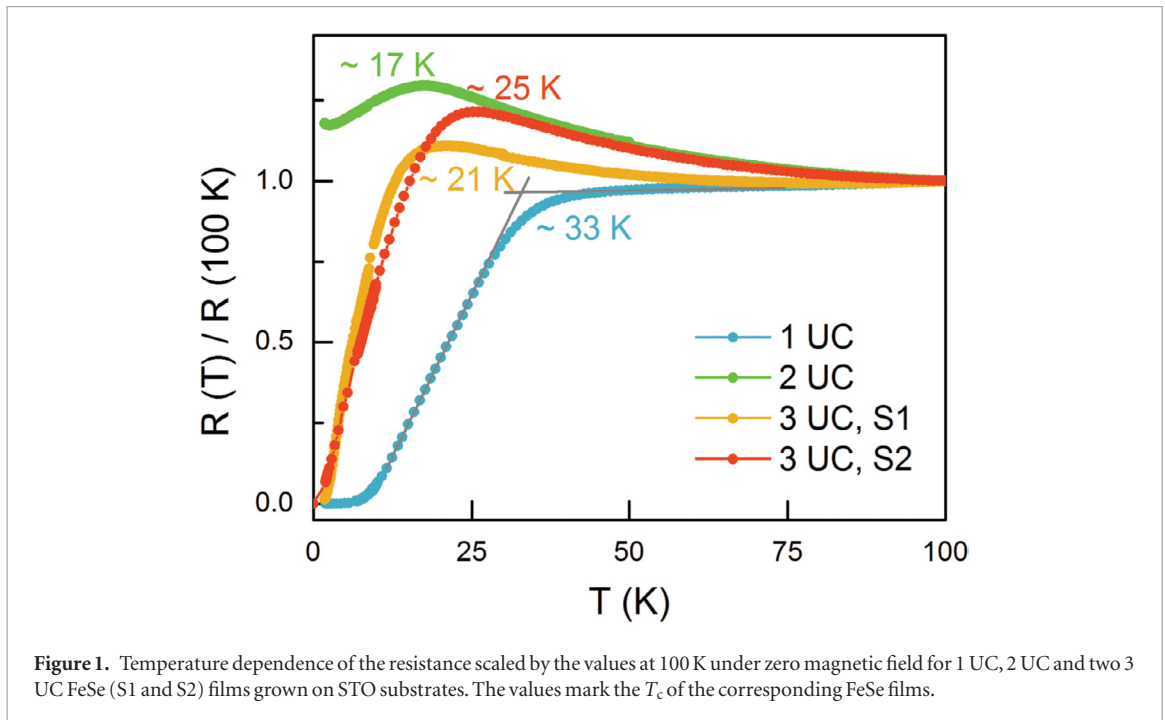


Figure 1. Temperature dependence of the resistance scaled by the values at 100 K under zero magnetic field for 1 UC, 2 UC and two 3 UC FeSe (S1 and S2) films grown on STO substrates. The values mark the T_c of the corresponding FeSe films.

is linked with linear Dirac band. Therefore, the MR provides an effective transport measurement for the intrinsic electronic structures of a material. Besides the traditional structure disorders, such as vacancy, adatom and dislocation, the spin fluctuation can be considered as a special type of spin disorder. It's well known that spin moment is very sensitive to the magnetic field, so that exotic MR features are also expected as an indirect signature to detect the spin fluctuation.

In this Letter, we report an *ex situ* magnetotransport study of ultrathin FeSe/STO films. A robust LMR is observed around the superconducting transition temperatures regardless of film thickness and protection layers. Furthermore, magnetotransport calculations have been performed to reproduce the experimentally observed LMR by including a magnetic field dependent disorder induced by spin fluctuation. Our results demonstrate the coexistence of LMR and superconductivity, and provide a defining magnetotransport signature for spin fluctuation in ultrathin FeSe/STO films.

Methods

Four FeSe films with varied thickness (1 UC, 2 UC, two 3 UC samples labeled as S1 and S2) were grown on insulating STO substrates by molecular beam epitaxy (MBE) as described in previous studies [2]. The FeSe films become superconducting after proper annealing in ultra-high vacuum (UHV) [38, 39]. Prior to be transferred out of UHV system for *ex situ* transport measurement, the films were capped with protection layers to avoid contamination and oxidation in atmosphere. For 2 UC and 3 UC FeSe films, 20 nm-thick amorphous Si was directly deposited as the protection layer. Since 1 UC FeSe film is more difficult

to survive in atmosphere, it is protected by 10 UC epitaxial non-superconducting FeTe protection layers and additional 20 nm-thick amorphous Si layer on top.

Results and discussion

Figure 1 presents the temperature dependence of resistance for the four samples measured in our experiment, where the resistance is scaled by each value at 100 K. The four films exhibit superconducting transition with varied T_c . To be specific, T_c is 33 K, 17 K, 21 K and 25 K for the 1 UC, 2 UC, 3 UC S1 and S2 sample, respectively. Here, T_c is defined as the intersection between the linear extrapolation of the normal state resistance and the superconducting transition regime. According to previous studies, the first FeSe layer on STO is superconducting [2, 39], and T_c varies with carrier doping level therein [38, 39]. Since the annealing condition for each sample is almost the same, the variation in T_c here may be attributed to the different capping layers, i.e. single crystalline FeTe layer or amorphous Si layer. In the latter case, Si atoms may mix into FeSe films and act as disorders, which would induce scattering and in turn degrade the superconductivity in the first FeSe layer. It turns out that an insulating behavior ($dR/dT < 0$) appears before superconducting transition in both 2 UC and 3 UC FeSe samples that are capped with amorphous Si layer.

We observe an unusual positive LMR at temperatures around the superconducting transition region. Figure 2(a) shows transverse MR ratio as a function of perpendicular magnetic field for the 3 UC S1 sample with $T_c \sim 21$ K. Here, the MR ratio is defined as $MR(B) = [R_{xx}(B) - R_{xx}(0)]/R_{xx}(0)$, with $R_{xx}(B)$ and $R_{xx}(0)$ denoting the resistance by standard four-probe

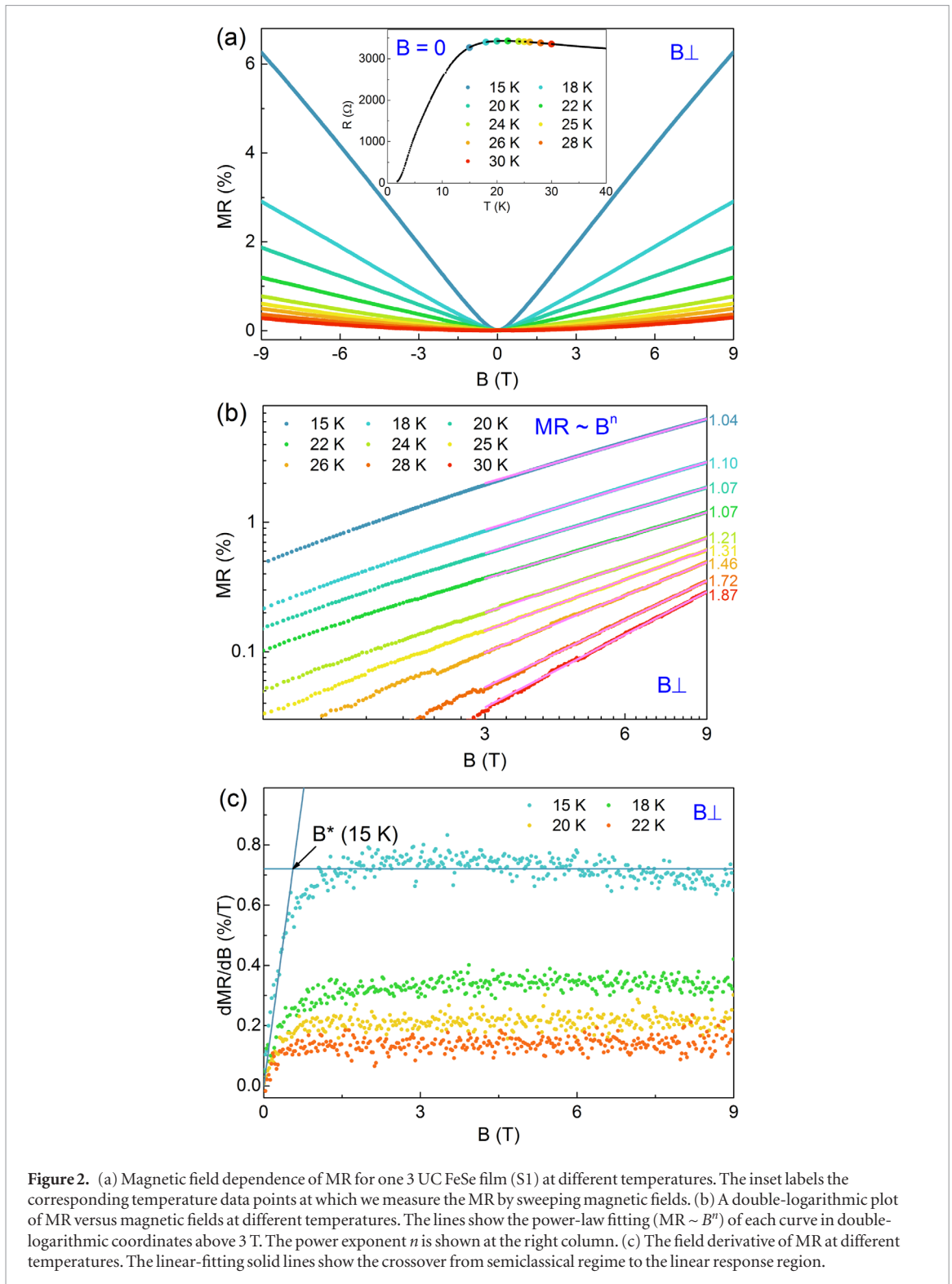
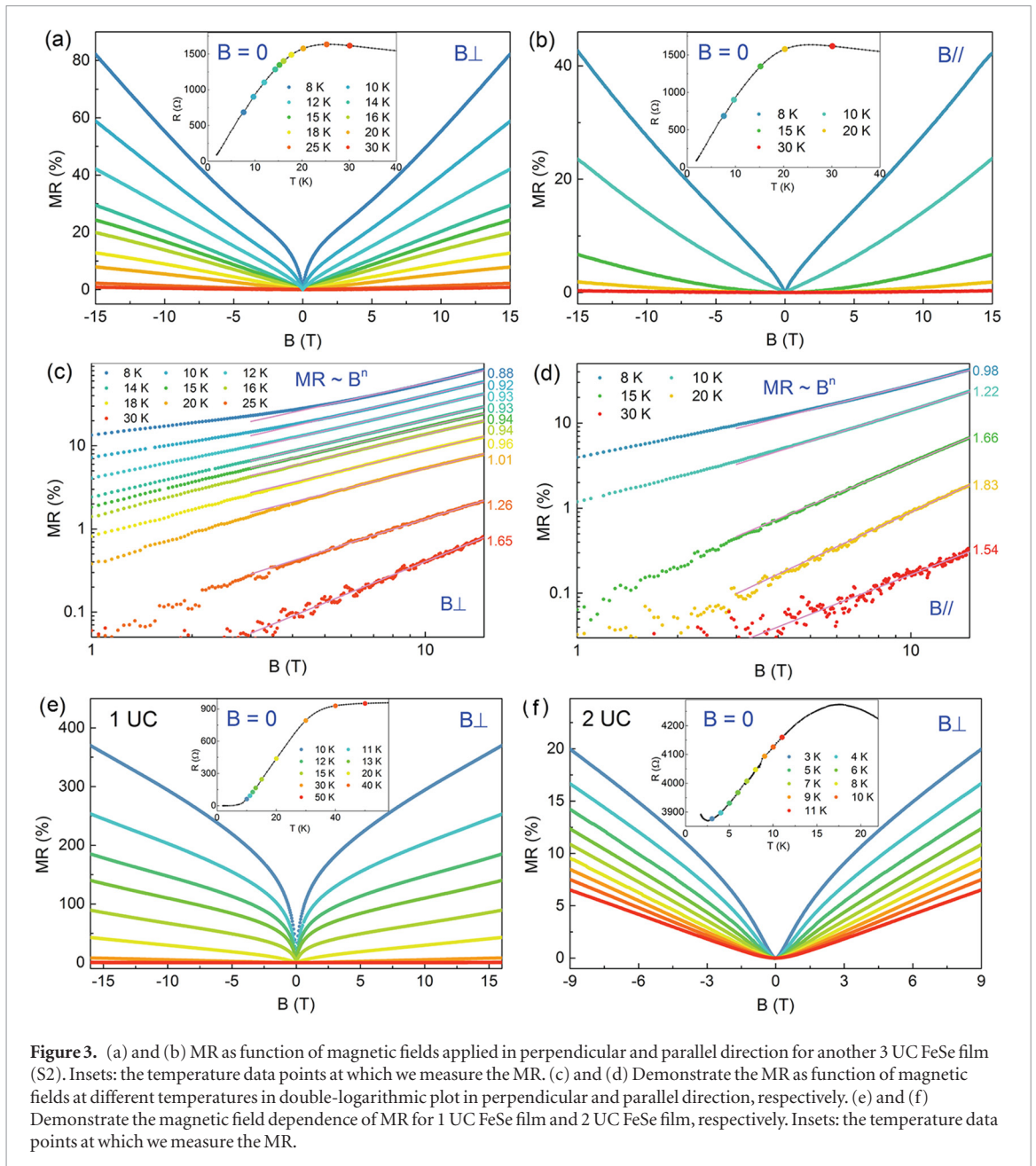


Figure 2. (a) Magnetic field dependence of MR for one 3 UC FeSe film (S1) at different temperatures. The inset labels the corresponding temperature data points at which we measure the MR by sweeping magnetic fields. (b) A double-logarithmic plot of MR versus magnetic fields at different temperatures. The lines show the power-law fitting ($MR \sim B^n$) of each curve in double-logarithmic coordinates above 3 T. The power exponent n is shown at the right column. (c) The field derivative of MR at different temperatures. The linear-fitting solid lines show the crossover from semiclassical regime to the linear response region.

measurement under applied magnetic field B and zero magnetic field, respectively. Displayed in the inset is the resistance versus temperature curve at zero magnetic field with marked temperature points at which we measured the MR by sweeping magnetic fields. In figures 2(b) and (c), the corresponding power-law fitting ($MR \sim B^n$) and the first-order derivative of MR (dMR/dB versus B) are demonstrated, respectively. At temperatures from 15 K to 22 K, coincidental observation of the power exponent $n \sim 1.04$ – 1.10 (figure 2(b)) and constant dMR/dB above a critical

magnetic field B^* (figure 2(c)) indicates an extraordinary linear response of MR in this regime. Here, B^* is defined as the intercept point of the two straight linear-fitting lines. With increasing temperature, the linear response of MR shrinks gradually and parabolic response emerges. At temperatures of 28 K and 30 K, the power-law fittings yield $n \sim 1.72$ and ~ 1.87 (figure 2(b)), respectively, indicative of parabolic MR. The field dependence of LMR can be clearly discerned from dMR/dB versus B curves shown in figure 2(c). Take the data measured at 15 K as an example,



dMR/dB develops almost linearly at low magnetic fields from $B = 0$, implying a quadratic magnetoresistive behavior. Above a crossover magnetic field $B^* \sim 0.6$ T, dMR/dB tends to be a constant, indicating a positive LMR behavior. Therefore, the relation of MR with B can be described as a crossover behavior from B^2 at low magnetic field to B at high magnetic field. This crossover behavior from the semiclassical regime to the LMR regime has also been reported in single crystal iron chalcogenide $Fe_{1+y}Te_{0.6}Se_{0.4}$ [40]. In that case, LMR has been obtained at high magnetic fields in a wide temperature range above T_c , which is different from our observation.

In order to further explore the dependence of LMR on the direction of the applied magnetic field, we perform the magnetotransport study on another 3 UC FeSe film (S2) with $T_c \sim 25$ K under both perpendicular and parallel magnetic fields, as shown in figures 3(a) and (b), respectively. For this 3 UC FeSe film

under perpendicular field at 8 K and 10 K, superconducting dip is observed at low magnetic field, while the LMR behavior appears at high field. At temperatures from 10 K to 20 K, the superconducting dip disappears, while the LMR extends to low fields and does not saturate at magnetic fields as high as 15 T. Above 20 K, as indicated by the power-law fitting ($MR \sim B^n$) shown in figure 3(c), the magnetic field dependence of MR evolves from linearity ($n \sim 1$) to the quadratic form ($n \sim 2$). The LMR temperature range is from 8 K to 20 K, which is located around the superconducting transition region. We point out that the temperature dependence of the power exponent n is a universal phenomenon for FeSe films under perpendicular magnetic field. That is, it is close to 1 (the LMR) around superconducting transition region, but increases monotonically and approaches to 2 at higher temperatures. Furthermore, the LMR behavior also exists in parallel field but in smaller temperature

range (the curve at 8 K in figure 3(b)). Therefore, the LMR is more apparent under perpendicular field for FeSe film. To better clarify the relation between the LMR and the film thickness, we further investigate the magnetic response of the 1 UC and 2 UC FeSe films under perpendicular field, as shown in figures 3(e) and (f), respectively. For 1 UC FeSe film with $T_c \sim 33$ K, the MR decreases gradually with increasing temperatures, similar to the situations in 3 UC films. At low temperatures below 20 K, the superconducting transition dominates at low magnetic field, while the LMR is obtained at high magnetic field. Similar LMR behavior has also been observed in 2 UC FeSe film. Besides, same as the observation in 3 UC samples, the LMR region in 1 UC and 2 UC samples is closely related to the superconducting transition region too. It is noticed that the 2 UC sample here is not of the highest quality since the residual resistance below T_c is large. In addition, the protection layer of the 1 UC film is 10 UC FeTe and 20 nm thick amorphous Si layer, while it is only amorphous Si capping layer for 2 UC and 3 UC FeSe films. Based on the data shown in this paper, we conclude that the existence of the LMR behavior is irrelevant to the ultrathin FeSe film thickness and the protection layer.

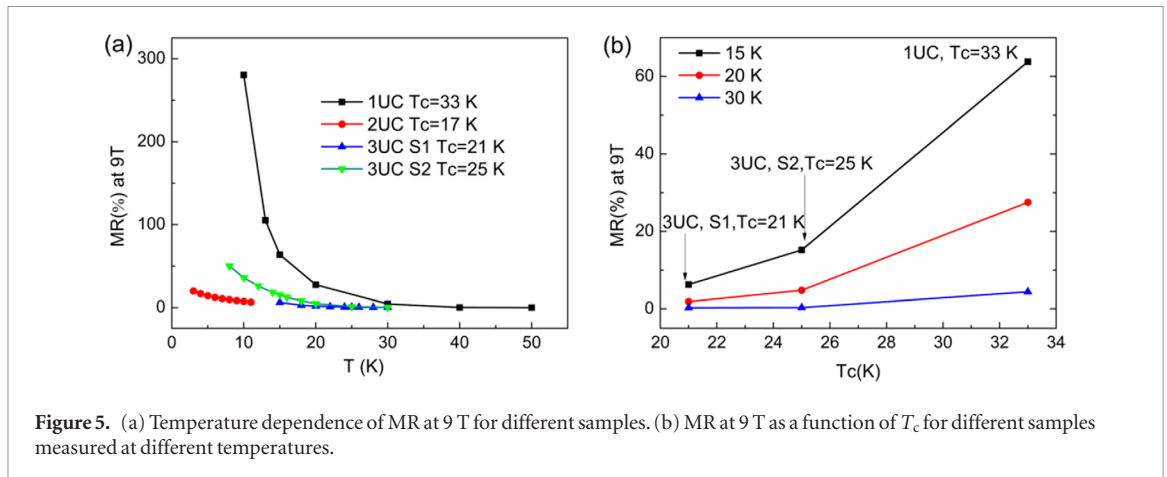
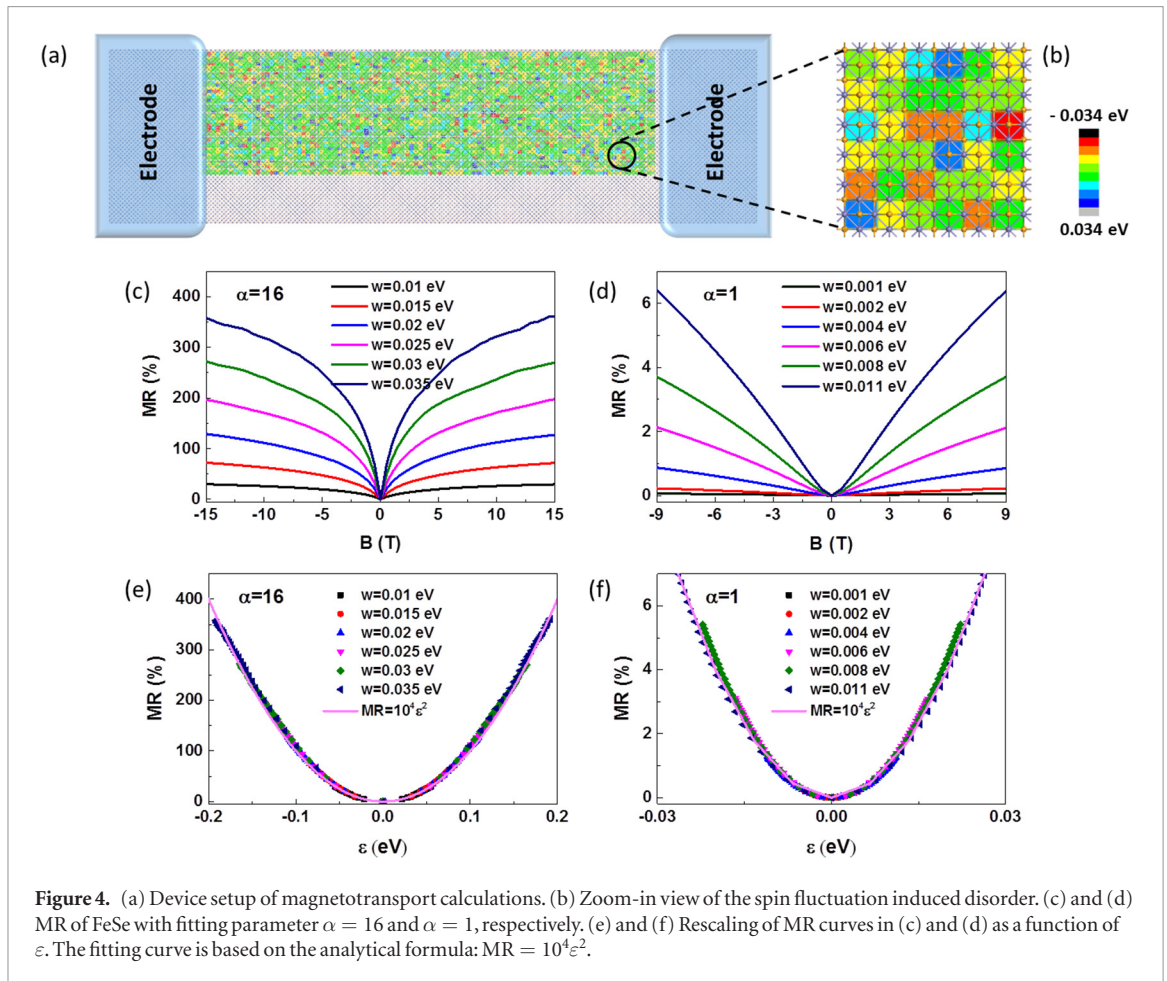
One striking feature of our experiment is that the LMR in all samples can only be observed around the superconducting transition region. In addition, we carried out transport measurements in parallel magnetic field, where Hall effects could not exist but the LMR was still observed (figure 3(b)). Therefore, such a special temperature dependence of LMR cannot be well understood by previous LMR models, such as the classical model for inhomogeneous conducting materials [35], the quantum model for gapless materials in quantum limit [36, 37], or the density fluctuations [41]. To identify the underlying physics of the LMR in FeSe/STO, first-principles calculations for 1UC FeSe with checkerboard AFM and spin orbital coupling (SOC) are carried out in the framework of GGA with PBE functional using the VASP package [42]. Such a spin configuration has been indirectly identified as the ground state of FeSe/STO recently [24]. The tight-binding (TB) Hamiltonian of FeSe is obtained from the Wannier fitting of first-principles bands, and the magnetic field is introduced by the standard Peierls substitution [43]. Using the TB Hamiltonian, a FeSe nanoribbon of 60 UC width is constructed and the two-terminal magnetotransport properties are calculated using the Landauer Buttiker formula. To suppress the inter-edge coupling, the disorder is restricted within 40 unit cells away from the edge. The disorder and magnetic field are only applied to the center scattering region with a length of 100 unit cells in the transport calculation (figures 4(a) and (b)), and the conductance is averaged over 40 configurations of disorder for statistical convergence. In order to reproduce the experimental results, we assume a magnetic field (B) dependent Anderson-typed random on-site disorder [44] as $\varepsilon_i = w_i \cdot s \cdot \ln(\alpha \cdot B + 1)$, account-

ing for the local spin fluctuation of Fe atoms in the superconducting transition region. Here, $s = \pm 1$ for spin-up and spin-down component, w_i is a Gaussian distribution with a standard deviation of w , and α is a fitting parameter representing the strength of magnetic field dependence.

In the above formula, $\alpha \cdot B$ is a dimensionless quantity so that α has the unit of T^{-1} (Tesla^{-1}). Such an assumption is physically reasonable, since the spin fluctuation is largest as the system going through magnetic to superconducting phase. Also, a large spin fluctuation has already been detected by inelastic neutron scattering in this region for bulk FeSe [23]. The theoretical MR results with $\alpha = 16$ are shown in figure 4(c), which are in qualitative agreement with the experimental results (figure 3(e)). In addition, we found that the overall shape of theoretical MR curve depends sensitively on the parameter α , indicating a relatively strong magnetic field dependence. Therefore, it's straightforward to expect different α values for FeSe films with different thickness and protection layers. To further support this conclusion, we have reproduced the experimental LMR in figure 2(a) by setting $\alpha = 1$, as shown in figure 4(d). Again, the qualitative agreement is very good. Furthermore, if we use $\varepsilon = w \cdot s \cdot \ln(\alpha \cdot B + 1)$, the standard deviation of ε_i , a simple analytical relation between MR and ε can be obtained. As shown in figures 4(e) and (f), the MR curves for different disorders can be rescaled collapsing onto the same curve by using ε as the x -axis. The curve can be fit with the formula $\text{MR} = 10^4 \varepsilon^2$ (solid line) which shows excellent agreement with the numerical results.

In the above calculations, the Fermi-level is set in the bulk states. The observed LMR is induced by the special spin fluctuation, which has no relation with the topological Dirac edge state in FeSe [24]. If the Fermi-level is set within the SOC gap in our calculations, the MR would be near zero. This different magnetic field response for bulk and topological Dirac edge states can be easily understood. Since spin-up and spin-down bands are approximately decoupled in FeSe [24], the spin-flip backscattering is forbidden for such topological Dirac edge states, so that their conductance cannot be suppressed by the disorder. However, the bulk states have backscattering channels even for the same spin component, so that their conductance is very sensitive to the disorder. Consequently, our observed LMR in FeSe films has a dramatically different physical origin as compared to the LMR in HgTe quantum well, which is induced by topological Dirac edge state with non-magnetic field dependent disorder [45].

Lastly, to further clarify the correlation between MR and spin fluctuation in FeSe thin films, we plot MR as a function of the temperature for the fixed magnetic field. As shown in figure 5(a), MR grows faster when the temperature is below T_c for all the samples, demonstrating the characterized features in the superconducting transition region. This phenomenon is



the same to the dynamic spin correlation function measured for bulk FeSe in the same region (figure 4(a) in [23]), which is used to show spin fluctuation. Therefore, MR and spin fluctuation are directly linked together in this region. Also, the MR as a function of T_c is plotted in figure 5(b). One can see that the higher T_c sample has a larger MR, indicating a larger spin fluctuation to quench down the magnetic moment in entering the superconducting phase. This is consistent with our general understanding about the correlation between AFM and superconductivity [46], and also with our theoretical modeling where a larger value of parameter α , which represents the intensity of spin

fluctuation in response to magnetic field, is used for the higher T_c sample.

Conclusion

In summary, we have performed a magnetotransport measurement for ultrathin FeSe/STO films and discovered an unusual LMR around the superconducting transition region. Furthermore, a spin fluctuation mechanism is proposed to explain the experimental observation. Our results demonstrate the coexistence of superconductivity and LMR, identifying indirectly a magnetotransport signature

for spin fluctuation in ultrathin FeSe/STO films. We envision our findings may inspire future studies to further investigate the interplay between magnetism and exotic magnetotransport properties in 2D superconducting materials.

Acknowledgment

We thank Xingao Gong for discussions. The experimental work was supported by the National Basic Research Program of China (Grant No. 2013CB934600), the Research Fund for the Doctoral Program of Higher Education of China (20130001110003), the Open Project Program of the Pulsed High Magnetic Field Facility (Grant No. PHMFF2015002) at the Huazhong University of Science and Technology, the Open Research Fund Program of the State Key Laboratory of Low-Dimensional Quantum Physics, Tsinghua University under Grant No. KF201501, and the Science Foundation of China University of Petroleum, Beijing (2462017YJRC012). The theoretical work was supported by the National Natural Science Foundation of China (Grant No. 21603210), the Chinese Youth One Thousand Talents Program, the Fundamental Research Funds for the Central Universities, and the United States Department of Energy Basic Energy Sciences (Grant No. DE-FG02-04ER46148). We also thank Supercomputing Center at USTC, CHPC at University of Utah and NERSC for providing the computing resources.

References

- [1] Hsu F-C et al 2008 *Proc. Natl Acad. Sci. USA* **105** 14262
- [2] Wang Q-Y et al 2012 *Chin. Phys. Lett.* **29** 037402
- [3] Zhang W-H et al 2014 *Chin. Phys. Lett.* **31** 017401
- [4] Liu D et al 2012 *Nat. Commun.* **3** 931
- [5] He S et al 2013 *Nat. Mater.* **12** 605
- [6] Tan S et al 2013 *Nat. Mater.* **12** 634
- [7] Liu X et al 2014 *Nat. Commun.* **5** 5047
- [8] Peng R et al 2014 *Nat. Commun.* **5** 5044
- [9] Lee J et al 2014 *Nature* **515** 245
- [10] He J et al 2014 *Proc. Natl Acad. Sci. USA* **111** 18501
- [11] Cui Y-T et al 2015 *Phys. Rev. Lett.* **114** 037002
- [12] Sun Y et al 2014 *Sci. Rep.* **4** 6040
- [13] Ge J-F, Liu Z-L, Liu C, Gao C-L, Qian D, Xue Q-K, Liu Y and Jia J-F 2014 *Nat. Mater.* **14** 285
- [14] Bozovic I and Ahn C 2014 *Nat. Phys.* **10** 892
- [15] Fan Q et al 2015 *Nat. Phys.* **11** 946
- [16] Li B, Xing Z W, Huang G Q and Xing D Y 2014 *J. Appl. Phys.* **115** 193907
- [17] Coh S, Cohen M L and Louie S G 2015 *New J. Phys.* **17** 073027
- [18] Zhang C et al 2017 *Nat. Commun.* **8** 14468
- [19] Xiang Y Y, Wang F, Wang D, Wang Q-H and Lee D-H 2012 *Phys. Rev. B* **86** 134508
- [20] Hu J 2013 *Phys. Rev. X* **3** 031004
- [21] Chubukov A V, Khodas M and Fernandes R M 2016 *Phys. Rev. X* **6** 041045
- [22] Dai P 2015 *Rev. Mod. Phys.* **87** 855
- [23] Wang Q et al 2016 *Nat. Mater.* **15** 159
- [24] Wang Z F et al 2016 *Nat. Mater.* **15** 968
- [25] Lia Z X, Wang F, Yao H and Lee D H 2016 *Sci. Bull.* **61** 925
- [26] Xu R, Husmann A, Rosenbaum T F, Saboungi M L, Enderby J E and Littlewood P B 1997 *Nature* **390** 57
- [27] Hu J and Rosenbaum T 2008 *Nat. Mater.* **7** 697
- [28] Wang W J, Gao K H, Li Z Q, Lin T, Li J, Yu C and Feng Z H 2014 *Appl. Phys. Lett.* **105** 182102
- [29] Wang X, Du Y, Dou S and Zhang C 2012 *Phys. Rev. Lett.* **108** 266806
- [30] Liang T, Gibson Q, Ali M N, Liu M, Cava R J and Ong N P 2015 *Nat. Mater.* **14** 280
- [31] Zhang C, Guo C, Lu H, Zhang X, Yuan Z, Lin Z, Wang J and Jia S 2015 *Phys. Rev. B* **92** 041203
- [32] Zhao Y et al 2015 *Phys. Rev. B* **92** 041104(R)
- [33] He L P, Hong X C, Dong J K, Pan J, Zhang Z, Zhang J and Li S Y 2014 *Phys. Rev. Lett.* **113** 246402
- [34] Zhao Y et al 2015 *Phys. Rev. X* **5** 031037
- [35] Parish M M and Littlewood P B 2003 *Nature* **426** 162
- [36] Abrikosov A A 1998 *Phys. Rev. B* **58** 2788
- [37] Abrikosov A A 2000 *Europhys. Lett.* **49** 789
- [38] Zhang W et al 2014 *Phys. Rev. B* **89** 060506
- [39] Wang Q, Zhang W, Zhang Z, Sun Y, Xing Y, Wang Y, Wang L, Ma X, Xue Q-K and Wang J 2015 *2D Mater.* **2** 044012
- [40] Sun Y, Taen T, Yamada T, Pyon S, Nishizaki T, Shi Z and Tamegai T 2014 *Phys. Rev. B* **89** 144512
- [41] Khouri T, Zeitler U, Reichl C, Wegscheider W, Hussey N E, Wiedmann S and Maan J C 2016 *Phys. Rev. Lett.* **117** 256601
- [42] Kresse G and Furthmüller G 1996 *Comput. Mater. Sci.* **6** 15
- [43] Hofstadter D R 1976 *Phys. Rev. B* **14** 2239
- [44] Anderson P W 1958 *Phys. Rev.* **109** 1492
- [45] Maciejko J, Qi X L and Zhang S C 2010 *Phys. Rev. B* **82** 155310
- [46] Scalapino D J 2012 *Rev. Mod. Phys.* **84** 1383